

# Rotherham Safeguarding Children's Partnership Annual Report 2024/25

Improving Lives Select Commission  
October 2025

# Local Safeguarding Children's Partnerships

- LSCPs replaced Local Safeguarding Children's Boards.
- Multi-Agency Safeguarding Arrangements (MASA) state how the three statutory safeguarding partners (Local Authority, Integrated Care Board and Police) should work in partnership to discharge their responsibilities to safeguard children as part of the Local Safeguarding Children's Partnership (LSCP).
- The Rotherham Multi-Agency Safeguarding Arrangements were endorsed at Cabinet on 18<sup>th</sup> November 2024.

# Statutory Safeguarding Partners

Under the Multi-Agency Safeguarding Arrangements, the Lead Safeguarding Partners are:

1. The Chief Executive of Rotherham MBC
2. The Chief Executive of South Yorkshire ICB
3. The Chief Constable of South Yorkshire Police

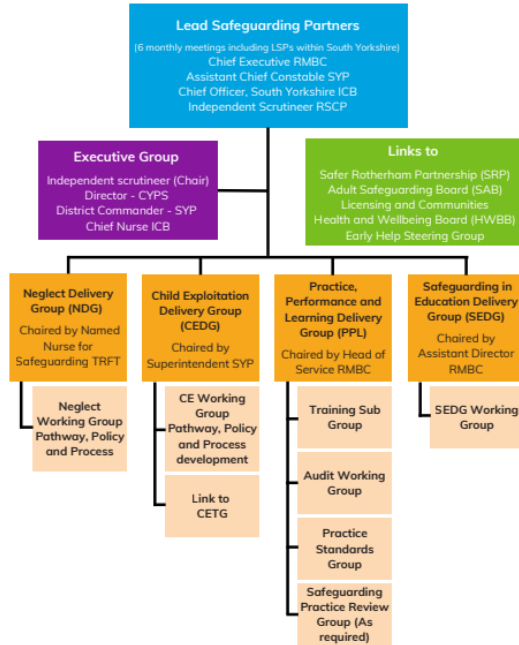
The Delegated Safeguarding Partners are:

1. Strategic Director, Children's Services, Rotherham MBC
2. Director of Nursing, South Yorkshire ICB
3. Chief Superintendent for Rotherham, South Yorkshire Police

There is also an Independent Chair and Scrutineer for RSCP, Darren Downs.

# Rotherham SCP Governance

RSCP Structure



There are four delivery groups which report into the Executive Group.

There are working groups which report into each delivery group.

# Rotherham SCP Governance

- Each Local Safeguarding Children's Partnership must publish an annual report by end September each year.
- Working Together 2023 statutory guidance sets out what the report must cover.
- RSCP's Annual Assurance Report was approved by the Lead Safeguarding Partners prior to publication.
- The Annual Report will be noted at Cabinet in November 2025.

# Inspections of partner agencies

- There were no inspections of TRFT or South Yorkshire Police in the relevant window April 2024 to March 2025.
- An Ofsted focused visit of Children's Services in July 2024 found effective work with children in need of protection and strong leadership.
- An Area SEND Inspection in October 2024 found our local SEND arrangements 'typically lead to positive experiences and outcomes for children and young people with SEND. The local area partnership is taking action where improvements are needed'.

# Progress against strategic priorities

- Developed the Neglect Pathway for earlier recognition and intervention, using the RESHAPED tool and the Graded Care Profile 2 tool.
- Established the Harm Outside The Home Pathway to respond to risk to children and young people outside their family environment.
- Safeguarding in Education delivery group involves education as a close fourth partner in safeguarding children.

# Progress against strategic priorities

- Five multi-agency audits completed.
- Training reaching 856 staff across a range of safeguarding topics.
- Over 100 attendees at Safeguarding Awareness Week 2024.
- 95% completion rate for 2024 s175 returns.
- Broadening membership of the delivery groups.
- Continued success with the Designated Safeguarding Lead forums.